

---

## PARK PLACE 3 BEDROOM

West Bay / North West Point, Cayman Islands

### PROPERTY DETAILS

---

Price: US\$825,000

MLS#: 414439

Type: Residential

Listing Type: Condominium

Status: New

Bedrooms: 3

Bathrooms: 2.5

Built: 2009

Sq. Ft.: 1,530

### PROPERTY DESCRIPTION

---

Great value for a Seven Mile Beach condo with easy public access to wide sandy beach across the street. Situated just 256 yards south of the Ritz Carlton and near multi-million-dollar condos, Park Place is a short walk to Camana Bay, grocery stores and loads of fabulous restaurants. This bright and fresh split-level 3-bedroom condo was recently updated with new furniture. All bedrooms have tile instead of carpet. Open kitchen and living area. Two bedrooms and a full bathroom are on the upper level. The lower level boasts a 500 sq ft. primary suite with large windows, walk-in closet, walk-in shower, tub and double sinks. Elevator access and ample parking, covered as well. The functional layout and convenient location makes this unit easy to rent and this complex has been gaining popularity on Airbnb and VRBO. Enjoy all the benefits of SMB living at a fraction of the cost of a beachfront condo which are going for US\$6 million.

### PROPERTY FEATURES

---

|             |        |
|-------------|--------|
| Views       | Inland |
| Block       | 12C    |
| Parcel      | 16H74  |
| Foundation  | Slab   |
| Floor Level | 2      |

### PRESENTED BY

---

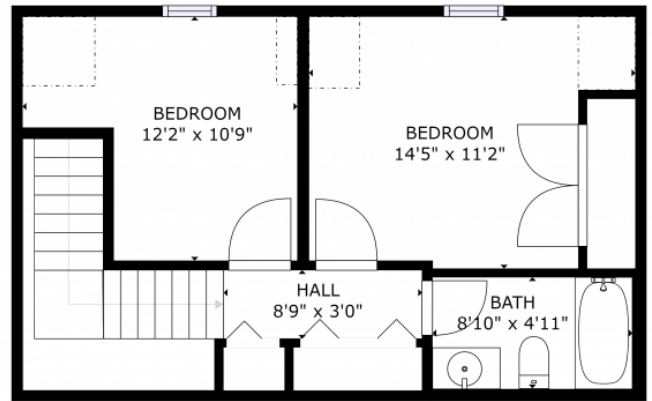


**Sophie Miles**

+1-345-926-9926

sophie@milestone.ky

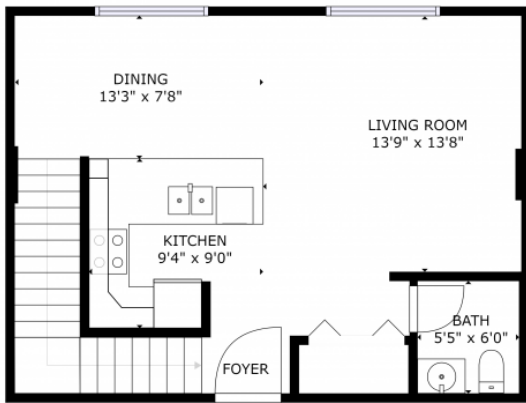
IMAGES



GROSS INTERNAL AREA  
 FLOOR 1: 104 sq. ft., FLOOR 2: 104 sq. ft.  
 FLOOR 3: 104 sq. ft., EXCLUDE AREAS  
 REDUCED HEADROOM BELOW 1.0M: 28 sq. ft.  
 TOTAL: 340 sq. ft.

FLOOR 2

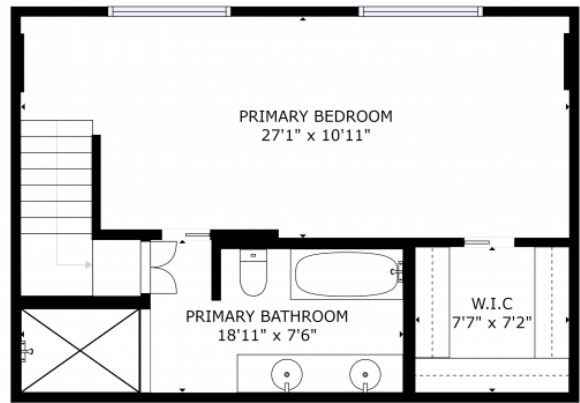
Matterport



GROSS INTERNAL AREA  
 FLOOR 1: 104 sq. ft., FLOOR 2: 104 sq. ft.  
 FLOOR 3: 104 sq. ft., EXCLUDE AREAS  
 REDUCED HEADROOM BELOW 1.0M: 28 sq. ft.  
 TOTAL: 340 sq. ft.

FLOOR 2

Matterport



GROSS INTERNAL AREA  
 FLOOR 1: 104 sq. ft., FLOOR 2: 104 sq. ft.  
 FLOOR 3: 104 sq. ft., EXCLUDE AREAS  
 REDUCED HEADROOM BELOW 1.0M: 28 sq. ft.  
 TOTAL: 340 sq. ft.

FLOOR 1

Matterport

