

---

## **PARK PLACE- 3 BEDROOM**

West Bay / North West Point, Cayman Islands

### PROPERTY DETAILS

---

Price: US\$795,000

MLS#: 414337

Type: Residential

Listing Type: Condominium

Status: Pen/Con

Bedrooms: 3

Bathrooms: 2.5

Built: 2009

Sq. Ft.: 1,530

### PROPERTY DESCRIPTION

---

Great value for a Seven Mile Beach condo with easy public access to wide sandy beach across the street. Situated just 256 yards south of the Ritz Carlton and near multi-million-dollar condos, Park Place is a short walk to Camana Bay, grocery stores and loads of fabulous restaurants. This bright and fresh split-level 3-bedroom condo was recently updated with new furniture and tile flooring. It features an open-concept main level kitchen and living area. Two bedrooms and a full bathroom are on the upper level. The lower level boasts a 500 sq.ft. master suite with large windows, walk-in closet, walk-in shower, tub and double sinks. Elevator access and ample parking (many covered) on-site. The functional layout and convenient location makes this unit easy to rent and this complex has been gaining popularity on Airbnb and VRBO. Enjoy all the benefits of SMB living without the cost of a beach-front address!

### PROPERTY FEATURES

---

|             |        |
|-------------|--------|
| Views       | Inland |
| Block       | 12C    |
| Parcel      | 16H8   |
| Foundation  | Slab   |
| Floor Level | 2      |

### PRESENTED BY

---

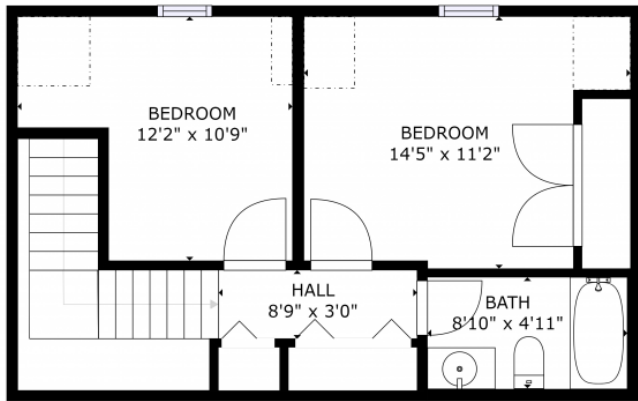


**Sophie Miles**

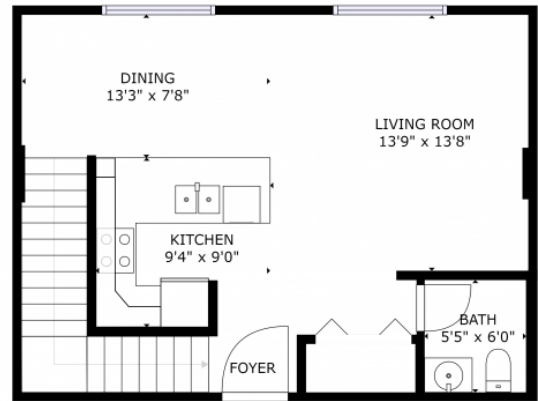
+1-345-926-9926

sophie@milestone.ky

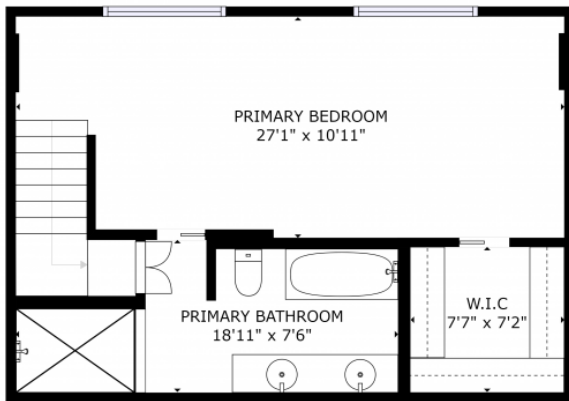
IMAGES



GROSS INTERNAL AREA  
FLOOR 3: 304 sq. ft. FLOOR 2: 304 sq. ft.  
FLOOR 1: 418 sq. ft. EXCLUDED AREAS:  
REDUCED HEADROOM BELOW 2.0M: 28 sq. ft.  
TOTAL: 1,330 sq. ft.



GROSS INTERNAL AREA  
FLOOR 1: 304 sq. ft. FLOOR 2: 304 sq. ft.  
FLOOR 3: 418 sq. ft. EXCLUDED AREAS:  
REDUCED HEADROOM BELOW 2.0M: 28 sq. ft.  
TOTAL: 1,330 sq. ft.



GROSS INTERNAL AREA  
FLOOR 1: 304 sq. ft. FLOOR 2: 304 sq. ft.  
FLOOR 3: 418 sq. ft. EXCLUDED AREAS:  
REDUCED HEADROOM BELOW 2.0M: 28 sq. ft.  
TOTAL: 1,330 sq. ft.



